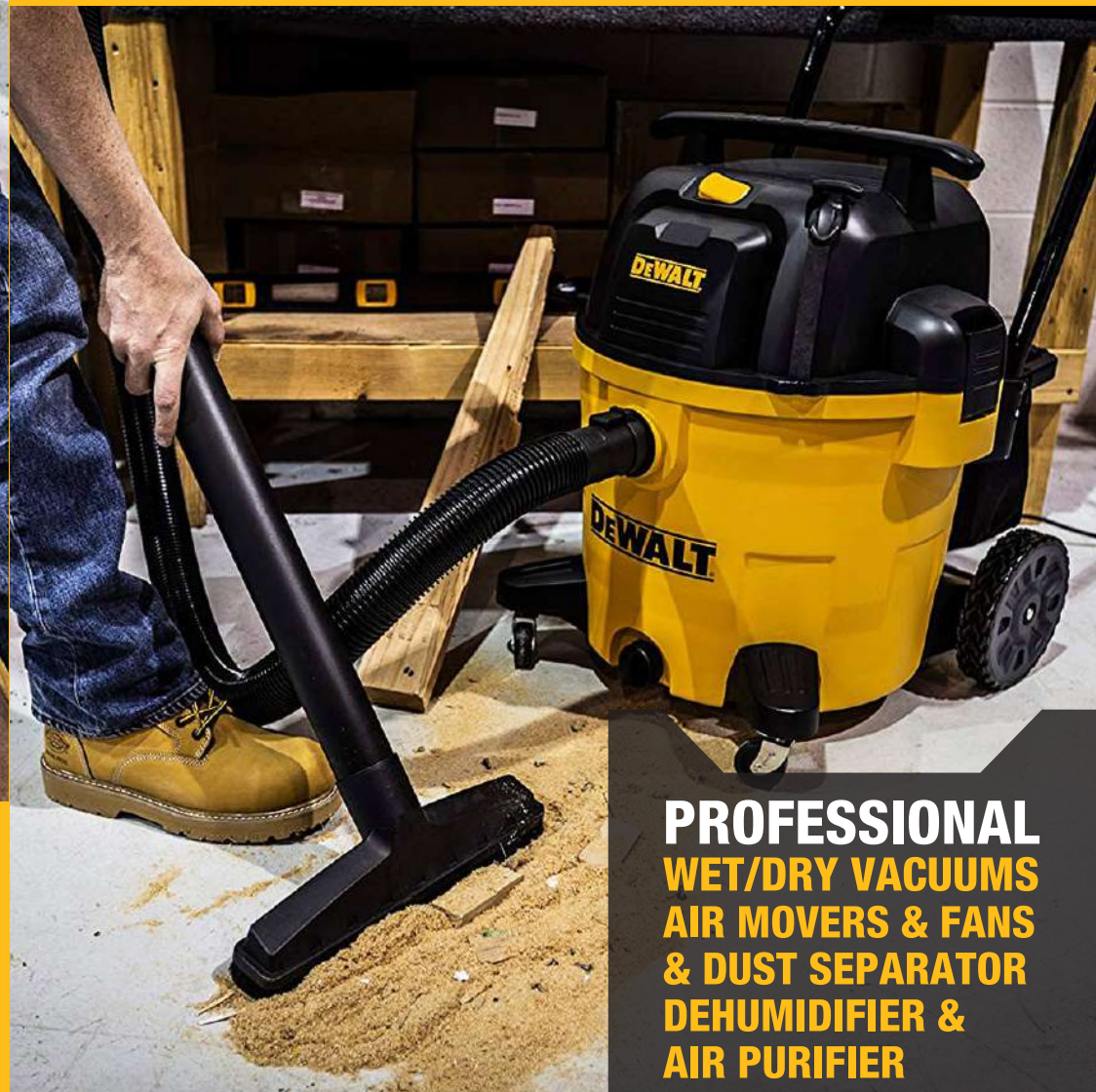


DEWALT®

PROFESSIONAL
WET/DRY VACUUMS
AIR MOVERS & FANS
& DUST SEPARATOR
DEHUMIDIFIER &
AIR PURIFIER



PROFESSIONAL
WET/DRY VACUUMS
AIR MOVERS & FANS
& DUST SEPARATOR
DEHUMIDIFIER &
AIR PURIFIER

DEWALT®

DESIGN HIGHLIGHTS



WHY DEWALT?

END USER RESEARCH

DeWALT is out there on the jobsite learning what works in order to bring the most superior products to market. Every innovation is driven by a desire for advanced performance, ease of use and durability.

INNOVATIVE PRODUCTS

A comprehensive understanding of the real applications that our users perform enables us to generate product features that are a genuine benefit to our users.



Wet & Dry

Works in Wet or Dry Applications without having to change filter.



Dust Extraction

Dust Extraction into either a dust bag on the tool or through an attachment to a dust extraction unit.



Drain Port

The vacuum has a drain port for easy to drain water without tilting the tank.



Quiet Technology

Quieter than standard wet/dry vacuums.



2X Runtime

Up to 2X longer life than standard wet/dry vacuums.

Tank capacity refers to actual tank volume and does not reflect capacity available during operation.

* "Peak Horsepower" (PHP) is a term used in the wet/dry vacuum industry for consumer comparison purposes. It does not denote the operational horsepower of a wet/dry vacuum but rather the horsepower output of a motor, including the motor's inertial contribution, achieved in laboratory testing. In actual use, wet/dry vacuum motors do not operate at the peak horsepower shown.

DeWALT® and the DeWALT Logo are trademarks of the DeWALT Industrial Tool Co., or an affiliate thereof and are used under license. The yellow/black color scheme is a trademark for DeWALT power tools & accessories. Product may differ from that pictured. Does not affect function.



Convenient cord-wrap design makes it easy to store the cord on the handle of unit.



Built-in blower port instantly converts your wet/dry vac into a powerful blower in seconds.



"Clean Connect™" washable and reusable cartridge filter for both wet & dry pick-up.



Vacs come fully equipped with accessories to help clean almost any job.



Durable accessory bag attaches to the vacuum to make all accessories easy to reach.



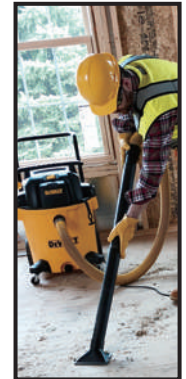
Large rear wheels and/or heavy-duty rubberized casters provide easy maneuverability.



Built-in tank drain makes removing liquid easy and quick.



Built-in hose wrap design makes it easy to store the hose on the head of the vacuum.



SPECIFICATIONS

SPECIFICATIONS

CONNECTING POWER TOOL



STEALTHSONIC

50% QUIETER



TOOL WARRANTY

3 YEAR LIMITED WARRANTY
1 YEAR FREE SERVICE
90 DAY MONEY BACK GUARANTEE

Model	DXV09P-QT	DXV12P-QT	DXV16P-QT	DXV04T	DXV05P	DXV06G	DXV06P	DXV06PL	DXV09P	DXV09PA	DXV10P	DXV09PTA
Hose Diameter	1-7/8"	2-1/2"	2-1/2"	1-7/8"	1-7/8"	1-7/8"	1-7/8"	1-7/8"	1-7/8"	1-7/8"	1-7/8"	1-1/4"
Max CFM	90	105	135	90	80	85	80	80	90	90	90	90
Peak HP*	5.0	5.5	6.5	5.0	4.0	5.0	4.0	4.0	5.0	5.0	5.5	5.0
Sealed Pressure	70"	72"	75"	50"	50"	50"	50"	50"	70"	70"	80"	70"



Model	DXV10PL	DXV12P	DXV14P	DXV16P	DXV16PA	DXV55DH	DXV05S	DXV08S	DXV10S	DXV10SA	DXV10SB	DXV16S
Hose Diameter	1-7/8"	2-1/2"	2-1/2"	2-1/2"	2-1/2"	1-7/8"	1-7/8"	1-7/8"	1-7/8"	1-7/8"	1-7/8"	2-1/2"
Max CFM	90	105	110	116	116	95	80	90	90	90	110	116
Peak HP*	5.0	5.5	6.0	6.5	6.5	4.0	4.0	5.0	5.0	5.0	6.5	6.5
Sealed Pressure	70"	70"	70"	73"	73"	85"	50"	50"	64"	64"	72"	73"

INDUSTRIAL FAN

5 YEAR LIMITED WARRANTY



Model	DXF1090	DXF1616	DXF1840	DXF2042	DXF2490
Speed Control	3	3	3	3	Stepless
Max CFM	900	1800	4200	5000	6500
Peak HP*	\	1/5	1/6	1/5	1/6
Power Cord	6.5'	6'	6'	6'	12'

AIR MOVERS

TOOL WARRANTY

3 YEAR LIMITED WARRANTY
1 YEAR FREE SERVICE
90 DAY MONEY BACK GUARANTEE



Model	DXAM2260	DXAM1008	DXAM1012	DXAM2818
Speed Control	3	3	3	3
Max CFM	600	800	1200	2000
Peak HP*	1/5	1/3	1/2	3/4
Power Cord	10'	10'	10'	30'

SPECIFICATIONS

STEALTHSONIC

NEW QUIET TECHNOLOGY

DUST SEPARATOR

TOOL WARRANTY

3 YEAR LIMITED WARRANTY
1 YEAR FREE SERVICE
90 DAY MONEY BACK GUARANTEE



Model	DXVCS001	DXVCS002	DXVCS003
Separator Efficiency (Max.)	99.5%	99.5%	99.5%
Tank Style	\	Poly	Stainless Steel
Tank	\	6Gal.	10Gal.

DEHUMIDIFIER



Model	DWXD102
Power Supply	120V/60Hz
Suitable For Area (SQ.FT)	1080-1620
Operation Condition	41-100°F
Refrigerant	R410a
Led Display	YES

AIR PURIFIER



Model	DWXAF101
Power	120V/60Hz
Effective Area (SQ.FT)	452 (5X Hour)
Air Flow (CFM)	118/206/235
Speed Control	3
Dust Sensor	YES

50% QUIETER™

Based on internal testing against DXV09P, DXV12P and DXV16P.

DXV09P-QTA

9 US GALLON
1 7/8" HOSE DIAMETER
5.0 PEAK HP



BONUS CONTRACTOR KIT

Washable Cartridge Filter (DXVC6910)
 Disposable Dust Bag x 3 (DXVA19-4101)
 Removable Accessory Storage Bag (DXVA19-5156)



DXV12P-QTA

12 US GALLON
2 1/2" HOSE DIAMETER
5.5 PEAK HP



BONUS CONTRACTOR KIT

Washable Cartridge Filter (DXVC6910)
 Disposable Dust Bag x 3 (DXVA19-4102)
 Removable Accessory Storage Bag (DXVA19-5156)



DXV16P-QTA

16 US GALLON
2 1/2" HOSE DIAMETER
6.5 PEAK HP



BONUS CONTRACTOR KIT

Washable Cartridge Filter (DXVC6910)
 Disposable Dust Bag x 3 (DXVA19-4102)
 Removable Accessory Storage Bag (DXVA19-5356)



Model	Max CFM	Sealed Pressure	Peak HP	Power Cord	Hose Diameter	Noise Level (dBA)
DXV09P-QTA	90	70"	5.0	10'	1-7/8"	≤ 65
DXV12P-QTA	105	72"	5.5	20'	2-1/2"	≤ 65
DXV16P-QTA	135	75"	6.5	20'	2-1/2"	≤ 65

DXV04T

DXV06G



4
US GALLON

1 7/8
HOSE DIAMETER

5.0
PEAK HP

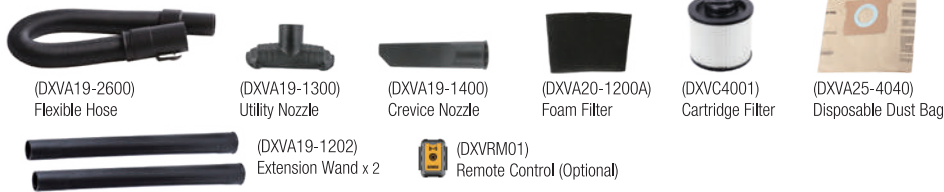
SHOW DETAILS



SPECIFICATION

Model	Material	Max CFM	Water Lift	Weight	Power Cord	Hose Diameter	Hose Length
DXV04T	PP	90	50"	13.23 lbs	20'	1-7/8"	2'-7"(Flexible)

INCLUDED ACCESSORIES



6
US GALLON

1 7/8
HOSE DIAMETER

5.0
PEAK HP

INCLUDED ACCESSORIES



Model	Material	Max CFM	Water Lift	Weight	Power Cord	Hose Diameter	Hose Length
DXV06G	PP	85	50"	20.94 lbs	10'	1-7/8"	5'-20"(Flexible)

DXV05P / DXV06P

DXV06PL / DXV09P



5 US GALLON
1 7/8" HOSE DIAMETER
4.0 PEAK HP

(DXVA19-2558) Hose
(DXVA19-1202) Extension Wand x 2
(DXVA19-1300) Utility Nozzle
(DXVA19-1400) Crevice Nozzle

(DXVA19-1900D) Floor Nozzle
(DXVC4001) Cartridge Filter
(DXVA19-5158) Mesh Accessory Bag
(DXVA19-4104) Disposable Dust Bag

(DXVRM01) Remote Control (Optional)



6 US GALLON
1 7/8" HOSE DIAMETER
4.0 PEAK HP

(DXVA19-2558) Hose
(DXVA19-1202) Extension Wand x 2
(DXVA19-1300) Utility Nozzle
(DXVA19-1400) Crevice Nozzle

(DXVA19-1900D) Floor Nozzle
(DXVC4001) Cartridge Filter
(DXVA19-5158) Mesh Accessory Bag
(DXVA19-4104) Disposable Dust Bag

(13-4002) Inflation Kit
(DXVA11-1100) Adaptor
(DXVRM01) Remote Control (Optional)



6 US GALLON
1 7/8" HOSE DIAMETER
4.0 PEAK HP

(DXVA19-2558) Hose
(DXVA19-1202) Extension Wand x 2
(DXVA19-1300) Utility Nozzle
(DXVA19-1400) Crevice Nozzle

(DXVA19-2400) Round Brush
(DXVC6910) Cartridge Filter
(DXVA19-5158) Mesh Accessory Bag
(DXVA19-4101) Disposable Dust Bag

(DXVRM01) Remote Control (Optional)



9 US GALLON
1 7/8" HOSE DIAMETER
5.0 PEAK HP

(DXVA19-2558) Hose
(DXVA19-1200A) Extension Wand x 2
(DXVA19-1300) Utility Nozzle
(DXVA19-1900D) Floor Nozzle

(DXVA19-2400) Round Brush
(DXVA19-1400) Crevice Nozzle
(DXVC6910) Cartridge Filter
(DXVA19-4101) Disposable Dust Bag

(DXVA19-5156) Removable Accessory Storage Bag
(DXVRM01) Remote Control (Optional)

Model	Material	Max CFM	Water Lift	Weight	Power Cord	Hose Diameter	Hose Length
DXV05P	PP	80	50"	13 lbs	10'	1-7/8"	7'
DXV06P	PP	80	50"	14.77 lbs	10'	1-7/8"	7'

Model	Material	Max CFM	Water Lift	Weight	Power Cord	Hose Diameter	Hose Length
DXV06PL	PP	80	50"	14.77 lbs	10'	1-7/8"	7'
DXV09P	PP	90	70"	20.5 lbs	10'	1-7/8"	7'

DXV09PA / DXV09PTA

DXV10P / DXV10PL



9
US
GALLON

1 7/8"
HOSE
DIAMETER

5.0
PEAK
HP




 (DXVA19-2500)
Hose


 (DXVA19-1200A)
Extension Wand x 2


 (DXVA19-1300)
Utility Nozzle


 (DXVA19-1900D)
Floor Nozzle


 (DXVA19-2400)
Round Brush


 (DXVA19-1400)
Crevice Nozzle


 (DXVC6910)
Cartridge Filter


 (DXVA19-4101)
Disposable Dust Bag


 (DXVA19-5156)
Removable Accessory
Storage Bag


 (13-4002)
Inflation Kit


 (DXVA11-1100)
Adaptor


 (DXVRM01)
Remote Control
(Optional)



10
US
GALLON

1 7/8"
HOSE
DIAMETER

5.5
PEAK
HP




 (DXVA19-2558)
Hose


 (DXVA19-1200A)
Extension Wand x 2


 (DXVA19-1300)
Utility Nozzle


 (DXVA19-1900D)
Floor Nozzle


 (DXVA19-2400)
Round Brush


 (DXVA13-4333)
Car Nozzle


 (DXVC6910)
Cartridge Filter


 (DXVA19-4101)
Disposable Dust Bag


 (DXVA19-5156)
Removable Accessory
Storage Bag


 (DXVRM01)
Remote Control (Optional)











CONNECTING POWER TOOL



9
US
GALLON

1 1/4"
HOSE
DIAMETER

5.0
PEAK
HP




 (DXVA13-2554)
Antistatic Hose


 (DXVA13-1502)
Extension Wand x 2


 (DXVA13-1588)
Utility Nozzle


 (DXVA13-1571)
Floor Nozzle


 (DXVA13-1508)
Crevice Nozzle


 (DXVC6914)
HEPA Cartridge Filter


 (DXVA19-5156)
Removable Accessory
Storage Bag


 (DXVA19-4111)
High Efficiency Dust Bag x 6


 (DXVA25-1140)
Pre-Filter













10
US
GALLON

1 7/8"
HOSE
DIAMETER

5.0
PEAK
HP




 (DXVA19-2558)
Hose


 (DXVA19-1200A)
Extension Wand x 2


 (DXVA19-1300)
Utility Nozzle


 (DXVA19-1900D)
Floor Nozzle


 (DXVA19-2400)
Round Brush


 (DXVA13-4333)
Car Nozzle


 (DXVC6910)
Cartridge Filter


 (DXVA19-4101)
Disposable Dust Bag


 (DXVA19-5156)
Removable Accessory
Storage Bag


 (DXVRM01)
Remote Control (Optional)

Model	Material	Max CFM	Water Lift	Weight	Power Cord	Hose Diameter	Hose Length
DXV09PA	PP	90	70"	20.5 lbs	10'	1-7/8"	7'
DXV09PTA	PP	90	70"	20.5 lbs	10'	1-1/4"	10'

Model	Material	Max CFM	Water Lift	Weight	Power Cord	Hose Diameter	Hose Length
DXV10P	PP	90	80"	23.15 lbs	20'	1-7/8"	7'
DXV10PL	PP	90	70"	23.15 lbs	20'	1-7/8"	7'

DXV12P / DXV14P

DXV16P / DXV16PA



12
US GALLON

2 1/2"
HOSE DIAMETER

5.5
PEAK HP




 (DXVA19-2556)
Hose


 (DXVA08-2502)
Extension Wand x 2


 (DXVA08-2503)
Utility Nozzle


 (DXVA08-2591)
Floor Nozzle


 (DXVA08-2401)
Round Brush


 (DXVA08-2506)
Crevice Nozzle


 (DXVC6910)
Cartridge Filter


 (DXVA19-4102)
Disposable Dust Bag


 (DXVA19-5156)
Removable Accessory Storage Bag


 (DXVRM01)
Remote Control (Optional)



16
US GALLON

2 1/2"
HOSE DIAMETER

6.5
PEAK HP




 (DXVA19-2556)
Hose


 (DXVA08-2502)
Extension Wand x 2


 (DXVA08-2503)
Utility Nozzle


 (DXVA08-2591)
Floor Nozzle


 (DXVA08-2401)
Round Brush


 (DXVA08-2506)
Crevice Nozzle


 (DXVA25-1213)
Hose Adaptor (Drain)


 (DXVA22-2520)
Muffler


 (DXVC6910)
Cartridge Filter


 (DXVA19-4102)
Disposable Dust Bag


 (DXVA19-5356)
Removable Accessory Storage Bag


 (DXVRM01)
Remote Control (Optional)



14
US GALLON

2 1/2"
HOSE DIAMETER

6.0
PEAK HP




 (DXVA19-2556)
Hose


 (DXVA08-2502)
Extension Wand x 2


 (DXVA08-2503)
Utility Nozzle


 (DXVA08-2591)
Floor Nozzle


 (DXVA08-2401)
Round Brush


 (DXVA08-2506)
Crevice Nozzle


 (DXVA25-1213)
Hose Adaptor (Drain)


 (DXVC6910)
Cartridge Filter


 (DXVA19-4102)
Disposable Dust Bag


 (DXVA19-5356)
Removable Accessory Storage Bag


 (DXVRM01)
Remote Control (Optional)



16
US GALLON

2 1/2"
HOSE DIAMETER

6.5
PEAK HP




 (DXVA19-2501)
Durable Hose


 (DXVA08-2502)
Extension Wand x 2


 (DXVA08-2503)
Utility Nozzle


 (DXVA08-2591)
Floor Nozzle


 (DXVA08-2401)
Round Brush


 (DXVA08-2506)
Crevice Nozzle


 (DXVA25-1213)
Hose Adaptor (Drain)


 (DXVA22-2520)
Muffler


 (DXVA13-4364)
Claw Nozzle


 (DXVC6910)
Cartridge Filter


 (DXVA19-4102)
Disposable Dust Bags x 3


 (DXVA19-5356)
Removable Accessory Storage Bag


 (DXVRM01)
Remote Control (Optional)

TOOL WARRANTY

5 Year Limited Warranty

1 Year Free Service


90 Day Money Back Guarantee

Model	Material	Max CFM	Water Lift	Weight	Power Cord	Hose Diameter	Hose Length
DXV12P	PP	105	70"	24.91 lbs	20'	2-1/2"	7'
DXV14P	PP	110	70"	32.4 lbs	20'	2-1/2"	7'

Model	Material	Max CFM	Water Lift	Weight	Power Cord	Hose Diameter	Hose Length
DXV16P	PP	116	73"	33.73 lbs	20'	2-1/2"	7'
DXV16PA	PP	116	73"	34.73 lbs	20'	2-1/2"	7'

DXV55DH / DXV04A

DXV05S / DXV08S



FIT'S FOR
55 GAL. BUCKET
1 7/8" HOSE DIAMETER
4.0 PEAK HP

(DXVA19-1104) Hose

(DXVA13-4364) Claw Nozzle

(DXVC6910) Cartridge Filter

(DXVA19-1900D) Floor Nozzle

(DXVA19-1900D) Angle Adapter



5 US GALLON
1 7/8" HOSE DIAMETER
4.0 PEAK HP

(DXVA19-2558) Hose

(DXVA19-1202) Extension Wand x 2

(DXVA19-1300) Utility Nozzle

(DXVA19-1400) Crevice Nozzle

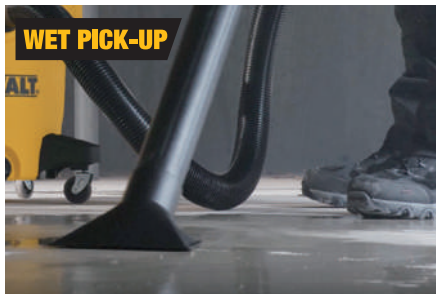
(DXVA19-1900D) Floor Nozzle

(DXVC4001) Cartridge Filter

(DXVA19-5158) Mesh Accessory Bag

(DXVA19-4104) Disposable Dust Bag

(DXVRM01) Remote Control (Optional)



Model	Material	Max CFM	Water Lift	Weight	Power Cord	Hose Diameter	Hose Length
DXV55DH	\	80	50"	13 lbs	10'	1-7/8"	7'



8 US GALLON
1 7/8" HOSE DIAMETER
5.0 PEAK HP

(DXVA19-2558) Hose

(DXVA19-1202) Extension Wand x 2

(DXVA19-1300) Utility Nozzle

(DXVA19-1400) Crevice Nozzle

(DXVA19-1900D) Floor Nozzle

(DXVC4001) Cartridge Filter

(DXVA19-5158) Mesh Accessory Bag

(DXVA19-4104) Disposable Dust Bag

(DXVRM01) Remote Control (Optional)

Model	Material	Max CFM	Water Lift	Weight	Power Cord	Hose Diameter	Hose Length
DXV05S	SS	80	50"	11.2 lbs	10'	1-7/8"	7'
DXV08S	SS	90	50"	15 lbs	10'	1-7/8"	7'

DXV10S / DXV10SA

DXV10SB / DXV16S



10 US GALLON
1 7/8" HOSE DIAMETER
5.0 PEAK HP



(DXVA19-2558) Hose
(DXVA19-1200A) Extension Wand x 2
(DXVA19-1300) Utility Nozzle
(DXVA19-1900D) Floor Nozzle
(DXVA19-2400) Round Brush
(DXVA13-4333) Car Nozzle
(DXVC6910) Cartridge Filter
(DXVA19-4101) Disposable Dust Bag
(DXVA19-5256) Removable Accessory Storage Bag
(DXVRM01) Remote Control (Optional)



10 US GALLON
1 7/8" HOSE DIAMETER
5.5 PEAK HP



(DXVA19-2558) Hose
(DXVA19-1200A) Extension Wand x 2
(DXVA19-1300) Utility Nozzle
(DXVA19-1900D) Floor Nozzle
(DXVA19-2400) Round Brush
(DXVA13-4333) Car Nozzle
(DXVC6910) Cartridge Filter
(DXVA19-4101) Disposable Dust Bag
(DXVA19-5256) Removable Accessory Storage Bag
(DXVRM01) Remote Control (Optional)



10 US GALLON
1 7/8" HOSE DIAMETER
5.0 PEAK HP



(DXVA19-2500) Hose
(DXVA19-1200A) Extension Wand x 2
(DXVA19-1300) Utility Nozzle
(DXVA19-1900D) Floor Nozzle
(DXVA19-2400) Round Brush
(DXVA13-4333) Car Nozzle
(DXVC6910) Cartridge Filter
(DXVA19-4101) Disposable Dust Bag
(DXVA19-5256) Removable Accessory Storage Bag
(13-4002) Inflation Kit
(DXVA11-1100) Adaptor
(DXVRM01) Remote Control (Optional)



16 US GALLON
2 1/2" HOSE DIAMETER
6.5 PEAK HP



(DXVA19-2556) Hose
(DXVA08-2502) Extension Wand x 2
(DXVA08-2503) Utility Nozzle
(DXVA08-2591) Floor Nozzle
(DXVA08-2401) Round Brush
(DXVA08-2506) Crevice Nozzle
(DXVA25-1213) Hose Adaptor (Drain)
(DXVA22-2520) Muffler
(DXVC6910) Cartridge Filter
(DXVA19-4102) Disposable Dust Bag
(DXVA19-5356) Removable Accessory Storage Bag
(DXVRM01) Remote Control (Optional)

Model	Material	Max CFM	Water Lift	Weight	Power Cord	Hose Diameter	Hose Length
DXV10S	SS	90	64"	23.6 lbs	10'	1-7/8"	7'
DXV10SA	SS	90	64"	23.6 lbs	10'	1-7/8"	7'

Model	Material	Max CFM	Water Lift	Weight	Power Cord	Hose Diameter	Hose Length
DXV10SB	SS	110	72"	23.6 lbs	20'	1-7/8"	7'
DXV16S	SS	116	73"	20.5 lbs	20'	2-1/2"	7'

FAN AIR MOVER

BLOWER CIRCULATOR
Powerful blower circulator ensures the high efficient work

HANDLE
Rotatable handle, easy to move the fan



FOOT SUPPORT
Strong foot pad lift the fan off the ground to reduce vibration

WHEEL
Large rear wheels for easy moving

ADJUSTMENT KNOB
360° tilting angle

DXF1090



DXF1616



DXF2042



DXF2490



DXF1840



DXF2490



2 POWER OUTLETS
With overload protection for connecting more units in daisy chain to blow



FOOT SUPPORT
3 user positions, flat, 45 degrees and 90 degrees

HANDLE
Sturdy handle for easy lifting and carrying

POWER SWITCH
3-Speed operation to conveniently control air flow



DXAM2260

1/5 | **600**
PEAK HP | MAX CFM



DXAM1008

1/3 | **800**
PEAK HP | MAX CFM



DXAM2012

1/2 | **1200**
PEAK HP | MAX CFM



DXAM2818

3/4 | **1800**
PEAK HP | MAX CFM



Model	Fan Size	Speed Control	Motor	Max CFM	Material	Power Cord
DXF1090	10"	3	\	900	Plastic	6.5'
DXF1616	16"	3	1/5 HP	1800	Plastic	6'
DXF1840	18"	3	1/6 HP	4200	Aluminum	6'
DXF2042	20"	3	1/5 HP	5000	Aluminum	6'
DXF2490	24"	Stepless	1/6 HP	6500	Aluminum	12'



» **Cool Your Greenhouse**

5
YEAR

LIMITED
WARRANTY

Model	Material	Speed Control	Motor	Max CFM	Power Cord
DXAM2260	PP	3	1/5HP	600	10'
DXAM1008	PP	3	1/3 HP	800	10'
DXAM1012	PP	3	1/2 HP	1200	10'
DXAM2818	PP	3	3/4 HP	1800	30'

DUST SEPARATOR

AIR PURIFIER & DEHUMIDIFIER

1 7/8" or 2 1/2"
48 or 64mm

CAPTURES UP TO 99.5%
EXTENDING LIFETIME
EXTENDIENDO LA VIDA ÚTIL
PROLONGER LA DURÉE DE VIE



DXVCS001

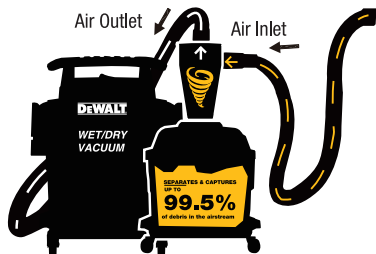


DXVCS002



DXVCS003

Why Dust Separator?



How It Works

- 1 Insert the vacuum's hose end into outlet of dust separator, the hose should be snapped into place.
- 2 Locate inlet port on the dust separator.
- 3 Insert one end of the 1-7/8" x 7 ft. hose into the inlet port.
- 4 Plug the power cord of the vacuum into an appropriate outlet.
- 5 Press the switch on the vacuum to the "ON" position.

Model	Separator Efficiency (Max.)	Tank Style	Tank
DXVCS001	99.5%	\	\
DXVCS002	99.5%	Poly	6Gal.
DXVCS003	99.5%	Stainless Steel	10Gal.



DWXAF101

POWER: 120V/60Hz
PARTICLE CLEAN AIR DELIVERY RATE (CFM): Up to 205
AIR FLOW (CFM) WITHOUT FILTERS:
L: 118 M: 206 H: 235
EFFECTIVE AREA (SQ.FT): 452 (5X Hour)
SPEED CONTROL: 3
FILTRATION TYPE: Medium efficiency+H11 HEPA filter
FILTER REPLACEMENT REMINDER: YES
DUST SENSOR: YES

COMMERCIAL DEHUMIDIFIER



RUBBER HANDLE
Provides a comfortable grip

CONTROL PANEL
Easy to operate

REUSABLE FILTER
Comes with easy to remove filter that can be rinsed, cleaned and reused

RUBBER FEETS
For stability

STURDY WHEELS
For easy mobility

SIDE HANDLE
To help lift unit



DWXD102

POWER: 120V/60Hz
SUITABLE FOR AREA (SQ.FT): 1080-1620
OPERATION CONDITION: 41-100°F
REFRIGERANT: R410a
COMPRESSOR: Rotary Type
CONTROL MODEL: Electronic
LED DISPLAY: YES

150P/D
UNDER 86°F
80% RH
CONDITION

ACCESSORY

HOSE

1-1/4"



DXVA13-2554
1-1/4" x 10'

1-7/8"



DXVA19-2600
1-7/8" x 2' to 7'



DXVA19-2601
1-7/8" x 5' to 20'



DXVA19-2558
1-7/8" x 7'



DXVA19-2500
1-7/8" x 7'

2-1/2"



DXVA19-2556
2-1/2" x 7'



DXVA19-2501
2-1/2" x 7'

EXTENSION WAND



DXVA13-1502
1-1/4" x 1.5'



DXVA19-1202 1-7/8" x 1.48'
DXVA19-1200A 1-7/8" x 1.64'



DXVA08-2502
2-1/2" x 1.64'

ACCESSORY (NOZZLE & BRUSH)

1-1/4"



Utility Nozzle
DXVA13-1588



Crevice Nozzle
DXVA13-1508



Floor Nozzle
DXVA13-1571

1-7/8"



Utility Nozzle
DXVA19-1300



Round Brush
DXVA19-2400



Floor Nozzle
DXVA19-1900D



Floor Brush
DXVA19-2591



Crevice Nozzle
DXVA19-1400



Car Nozzle
DXVA13-4333

2-1/2"



Utility Nozzle
DXVA08-2503



Round Brush
DXVA08-2401



Floor Brush
DXVA08-2591



Crevice Nozzle
DXVA08-2506

UNIVERSAL



Muffler
DXVA22-2520



Claw Nozzle
DXVA13-4364



Tool Adapter
DXVA15-1100

HOSE CONNECTOR



1-7/8" Hose Connector
DXVA19-2748



2-1/2" Hose Connector
DXVA08-2714

ACCESSORY

DUST BAG & FOAM FILTER



Disposable Dust Bag
DXVA25-4040
Fit for DeWALT 4Gal.



Disposable Dust Bag
DXVA19-4103
Fit for DeWALT DXV06Gal.



Disposable Dust Bag
DXVA19-4104
Fit for DeWALT 5-8Gal.



Disposable Dust Bag
DXVA19-4101
Fit for DeWALT 6-10Gal.



Disposable Dust Bag
DXVA19-4102
Fit for DeWALT 12-16Gal.



High Efficiency Dust Bag
DXVA19-4111
Fit for DeWALT 6-10Gal.



High Efficiency Dust Bag
DXVA19-4112
Fit for DeWALT 12-16Gal.



Foam Filter
DXVA20-1200A
Fit for DeWALT DXV04T



Pre-Filter
DXVA25-1140

ACCESSORY BAG



Mesh Accessory Bag
DXVA19-5158
Fit for DeWALT 5-8Gal.



Removable Accessory Storage Bag
DXVA19-5156 Fit for DeWALT 9-12Gal.
DXVA19-5256 Fit for DeWALT DXV10S



Removable Accessory Storage Bag
DXVA19-5356
Fit for DeWALT 14-16Gal.

ADAPTOR



DXVA08-2713
2-1/2" to 1-1/4"



DXVA19-2780
1-7/8" to 1-2/3"



DXVA11-2100
1-7/8" to 2-1/2"



DXVA11-1100
1-7/8" to 1-1/4"



DXVA08-2718
2-1/2" to 1-7/8"



Hose Adapter (Drain)
DXVA25-1213

CARTRIDGE FILTER

Standard Cartridge Filter



DXVC6910 (Large)
Fit for DeWALT 6-16gal.
DXVC4001 (Small)
Fit for DXV04T, DXV25P,
DXV05S & DXV08S

Fine Cartridge Filter



DXVC6912 (Large)
Fit for DeWALT 6-16gal.
DXVC4002 (Small)
Fit for DXV04T, DXV25P,
DXV05S & DXV08S

HEPA Cartridge Filter



DXVC6914 (Large)
Fit for DeWALT 6-16gal.
DXVC4003 (Small)
Fit for DXV04T, DXV25P,
DXV05S & DXV08S



CARTRIDGE FILTER
INSTALLATION



Test Method: Initial fractional efficiency of a flat sheet media per EN1822-3 (2009) modified for efficiency at specified size.